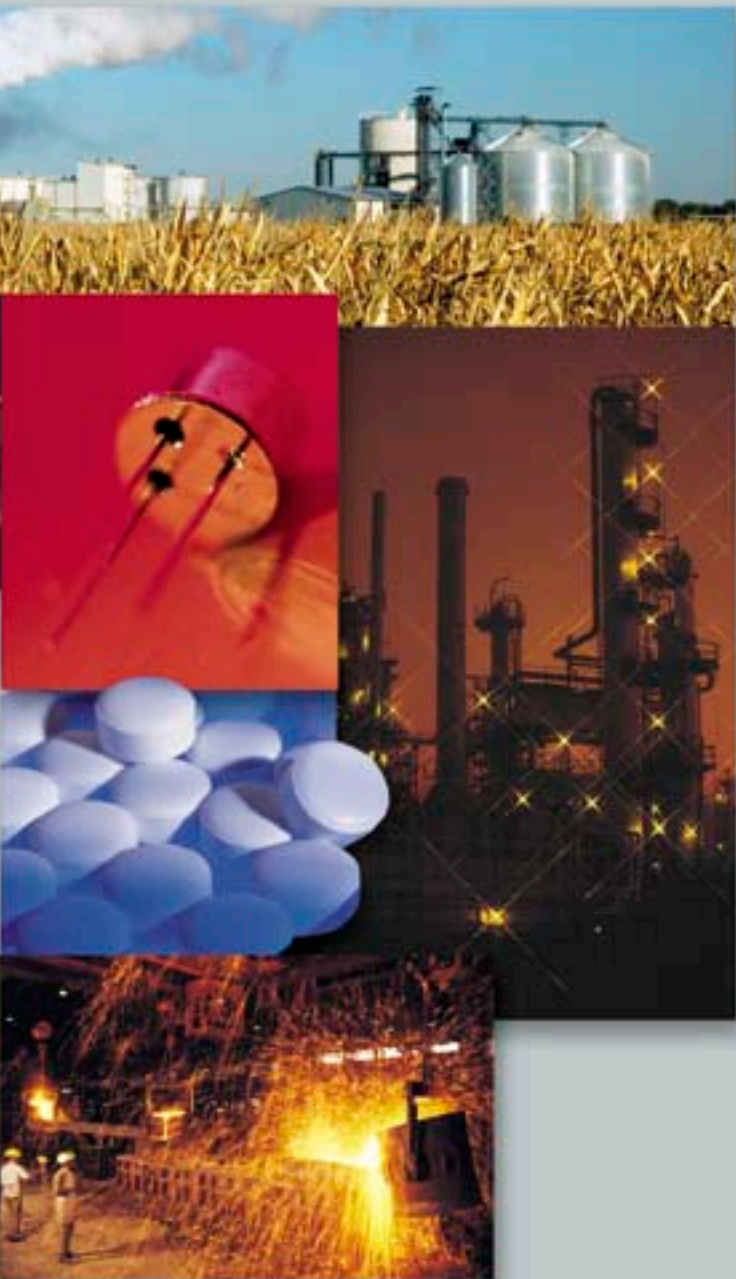


Extrel CMS

# MAX300-IG

Industrial Gas Analyzer



# The Extrel® MAX300-IG™ Industrial Gas Analyzer represents the latest in mass spectrometer and data system technology. This seventh generation on-line process mass spectrometer was designed to meet the analysis needs of customers worldwide.

## Reliability

The MAX300-IG has been designed for reliable, continuous analysis in humid, hot, and tough industrial environments, including hazardous locations.

Demonstrated uptime of greater than 98% ensures that our customers realize the benefits of fast on-line analysis and process optimization.

Continuous background diagnostics alert the user of analyzer issues, and action is taken to maximize the quality of the data being delivered. Speed, sensitivity, stability, and precision are the four cornerstones of successful process optimization and the means for maximizing ROI (Return on Investment). The MAX300-IG delivers all four with great performance.

## Performance

**Speed.** The MAX300-IG offers a typical analysis time of less than 400ms per component with the capability to analyze an unlimited number of components and sample streams. The analysis time can be longer or shorter, depending on the process requirements.

**Sensitivity.** Detection ranges are 100% to 10 ppm (parts per million) using a Faraday Detector or 100% to 10 ppb (parts per billion) using the optional Dual Faraday/Electron Multiplier detector.

**Stability.** The MAX300-IG has a 30 day stability of 0.5% RSD (Relative Standard Deviation), based on a 1% Argon concentration.

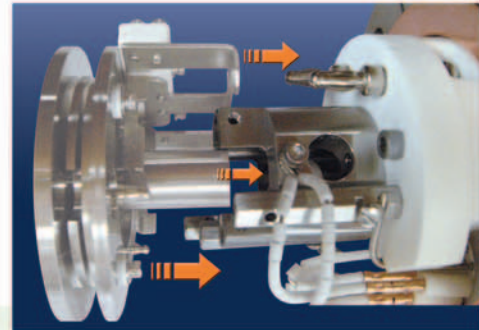
**Precision.** The MAX300-IG has a precision of +/- 0.0025 absolute, based on a 1% Argon concentration.



## Maintainability

Our customers report that Extrel's process mass spectrometers have the lowest per analysis cost of ownership of any multicomponent analyzer, and the MAX300-IG is no exception. And, now we've added another innovative feature to reduce your maintenance time ... **A Disposable Dual-Filament Ionizer Assembly.**

The new disposable ionizer eliminates the need to clean the ionizer when replacing filaments, decreasing maintenance downtime. The ionizer assembly houses two filaments (one active and one spare) with automatic switch over and auto calibration.



## Support

For over 40 years, Extrel has been building lasting relationships with our customers who have come to rely on this partnership. We have the most experienced and competent service and support personnel in the industry, and only employ factory-trained and certified personnel. We are committed to providing the highest quality support services for our +1,000 process and research instruments worldwide.

Extrel's service department is a key factor in ensuring the optimum performance and uptime for your system. We offer all of the support services you need. From the first application review, we are there to help you.

### Our services include:

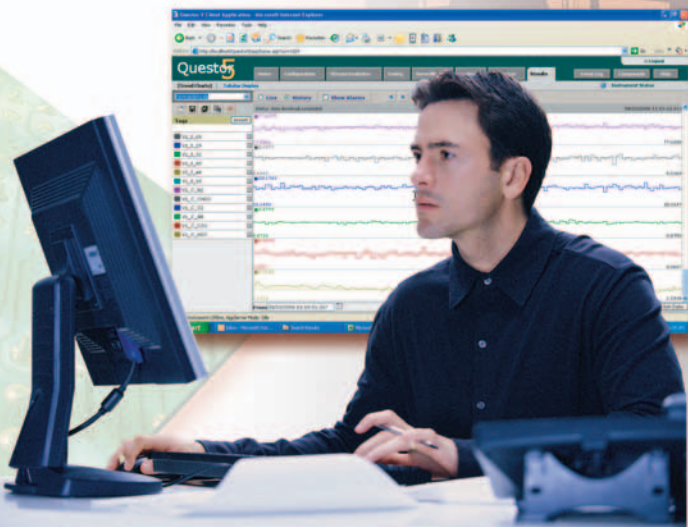
- Commissioning Service
- Customer Partnership Program
- Factory Repair Center
- Field Service
- Remote Support
- Service Maintenance Contracts
- Spare Parts and Accessories
- Technical Phone Support
- Training

## Flexibility

The heart of the MAX300-IG system is the Questor® 5 Data System. This software has been designed to provide secure access to your system and data, easy set-up, and automated operation. The Questor 5 user interface is a web-based application that gives the user access to all analyzer operations and data in a familiar web page format.

The user interface is accessed via Internet Explorer® 5.0 or higher. The connection to the analyzer can be directly from a workstation or from a plant network via a standard Ethernet or equivalent link. Built-in Security features allow our customers to meet government requirements for electronic records such as those defined in 21 CFR 11.

A Sequencer function allows the system to run automatically, controlling sample selection, automated calibrations, and analytical methods. Analyzer functions are triggered in a repeating loop, at a defined time, or in response to alarm conditions. The Sequencer function enables a high level of customized and automated operation.



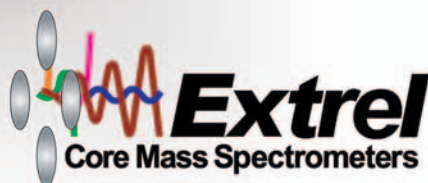
## Sample Selection

At Extrel, we realize that every application has unique sample system requirements. We offer the widest and most flexible array of inlet systems including solenoids and both small and large internal diameter rotary valves. The MAX300-IG can handle as many sample positions as needed to optimize the application. As an example, the 80 position FASTValve is ideally suited for applications such as ambient air monitoring which requires many sample points.



The MAX300-IG can be configured for use in either general purpose or hazardous areas including ATEX Zone 1 classifications. In addition, the MAX300-IG has several cooling options to accommodate hot industrial environments including: fan cooled, air conditioning, or water cooled.

**Industry Standard Communications** include Ethernet, Bi-directional Modbus® RTU or TCP/IP, OPC, Analog and Digital Outputs, and custom communications.



For more information about Extrel's process industrial gas analyzers, visit our website at [www.extrel.com](http://www.extrel.com) or email us at [info@extrel.com](mailto:info@extrel.com).

# MAX300-IG

# Applications

## Petrochemical

Acetic Acid  
Acrylonitrile  
Ambient Air Monitoring  
Ammonia  
Catalysis Research  
Coal Gasification  
Ethylene  
Ethylene Oxide  
Fuel Gas  
Hydrogen  
Hydrogen Cyanide  
Polyethylene  
Polypropylene  
Methanol  
Natural Gas  
Vinyl Chloride  
Environmental Monitoring  
PFCs  
Waste Water Analysis  
Propane Dehydrogenator  
Fence Line Monitoring  
Process Gas Leak Detector

## Metals Production

Blast Furnace  
Coke Oven  
Carburization  
Vacuum Decarburization  
Controlled Atmosphere Analysis  
Fuel Gas  
Emissions Monitoring  
Gas Mixing Stations  
Basic Oxygen Process

## Pharmaceutical

Fermentation Headspace  
Solvent Recovery  
Lyophilizer Monitoring  
Feedstock Purity  
Emissions Monitoring  
Waste Water Analysis  
Dryers  
Ambient Air Monitoring

## Semiconductor/Gas Production

UHP Gas Impurities  
HAPS Emissions  
Green House Gas Emissions  
Scrubber/Burnbox Efficiency  
Ambient Air Monitoring  
Argon in Oxygen  
Waste Water Analysis

## Water Analysis

Chlorine Monitoring  
Residual Sulfite Monitoring  
Aeration System Performance  
HRVOC Analysis

## Food & Fragrance

Gas Quality Monitoring  
Fermentation Headspace  
Beverage Container Contaminates  
Solvent Recovery  
Ambient Air Monitoring  
QA/QC  
HRVOC Analysis

## Represented By



575 Epsilon Drive  
Pittsburgh, PA 15238-2838 USA  
Tel: 412-963-7530 Fax: 412-963-6578

[www.extrel.com](http://www.extrel.com)

Extrel CMS maintains sales and service offices around the world.  
Please contact us for the office nearest you or visit our web site.

