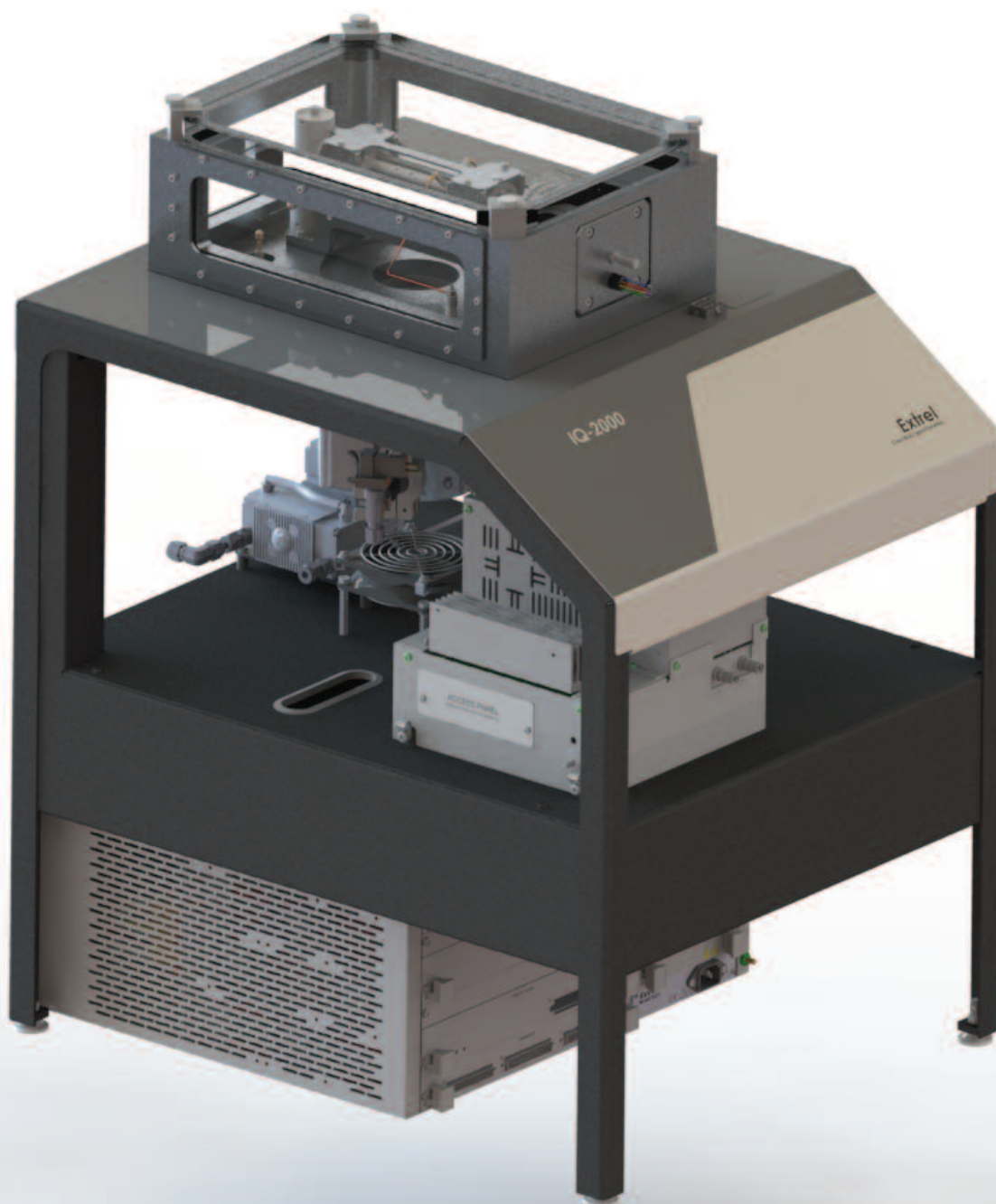


IQ-2000

Quadrupole Mass Spectrometer



PRODUCT NOTE

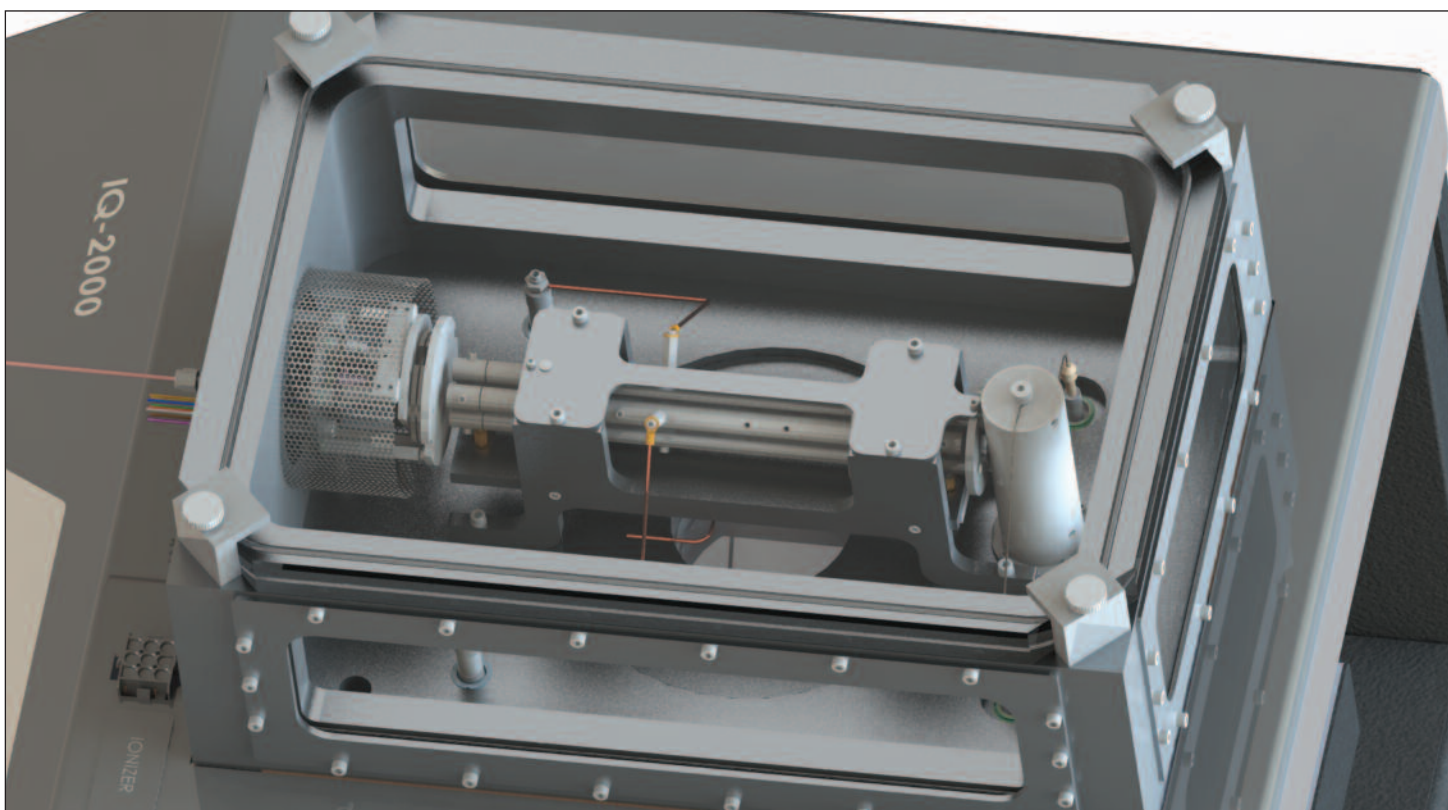


IQ-2000

Inspiring Novel Scientific Progress in Research Environments

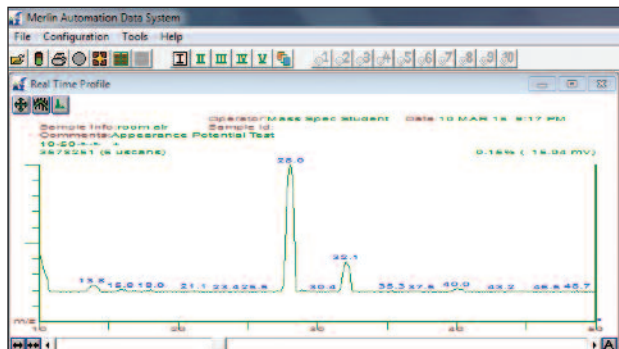
The Extrel® IQ-2000™ mass spectrometer was developed with the input of educators to be an effective, modern-day teaching tool. With a glass top and sides and an open layout design, the system is an exciting and visually arresting instrument for students to observe.

The IQ-2000 is a demonstration of the high-quality engineering and instrumentation that goes into Extrel's quadrupole mass spectrometers. Extrel is widely respected for the quality of mass spectrometer systems which it provides to the world's top research scientists. In response to increasing requests for complete turn-key systems built around its well-respected quadrupole mass spectrometer technology, Extrel has developed the IQ-2000 research-grade mass spectrometer system.

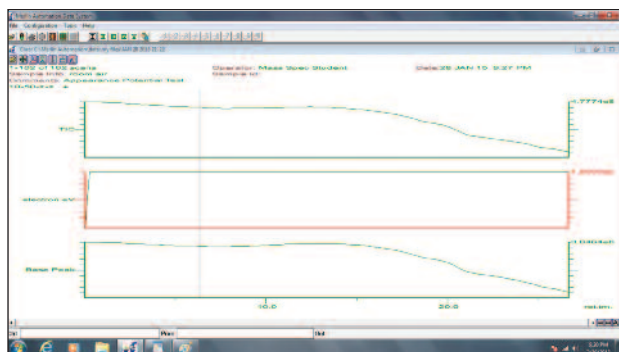


Features:

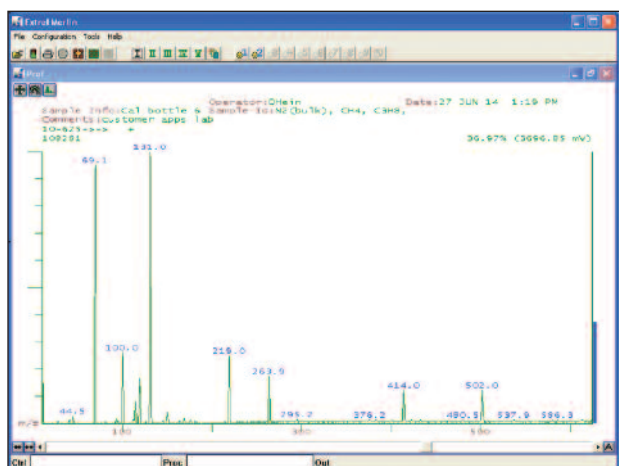
- Mass analyzer: 9.5 mm quadrupole filter
- Operating frequency: 1.0 MHz
- Mass Range: 1-2000 amu standard
- Detectable components: Any gas or vapor with a molecular weight or fragment ion within the mass range
- Dynamic Range: 10^7
- Ionizer: Disposable EI source
 - Plug and play for ease of maintenance
 - Two filaments: one active and one spare



The IQ-2000 features the full power of the Merlin Automation Data System which provides research level features and user options for the quadrupole mass spectrometer.



The IQ-2000, powered by Merlin, allows for in-depth trending of data for students and researchers alike to discover how their analytical systems are working. Data can be exported for statistical analysis as a .txt file that can then be imported into Microsoft® Excel® software, Igor Pro software, or Origin® software.



The IQ-2000 provides high quality, stable and sensitive data over its 2000 amu mass range. The ability to evaluate specific analytes while ignoring unimportant species provides more direct answers to researchers' questions.

A Bold Tool for Education

Extrel developed an innovative educational system to teach mass spectrometry: the revolutionary IQ-2000 educational mass spectrometer.

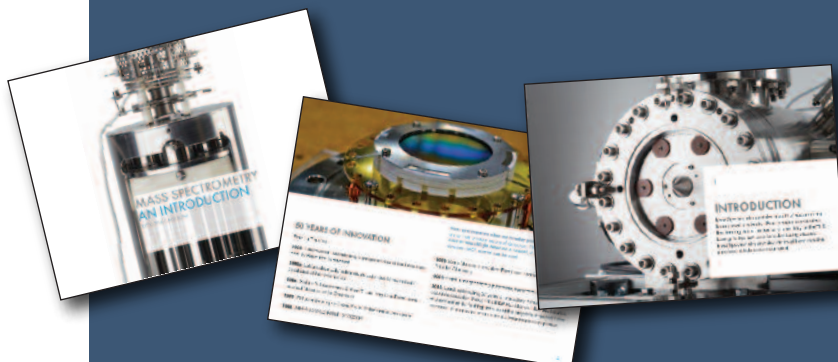
The high-performance quadrupole spectrometer is designed with:

- An open chamber to highlight the high-tech components
- A small, transportable profile that facilitates convenient mobility between classrooms
- A fully-interactive e-textbook written by researchers who are experts in the field of mass spectrometry

A Textbook for All Scientists

Extrel supports the use of the IQ-2000 in the classroom with a unique e-textbook. The collaborative effort includes instructions from multiple experts in the field of mass spectrometry. Each chapter focuses on a specific area of mass spectrometry, immersing the student in real-world scenarios, and encouraging hands-on interaction with the instrument through demonstrative laboratory projects.

The e-textbook is available for download from the Apple® Bookstore or the Amazon.com® Kindle® Store.



IQ-2000 System Specifications

Power Supply Options:

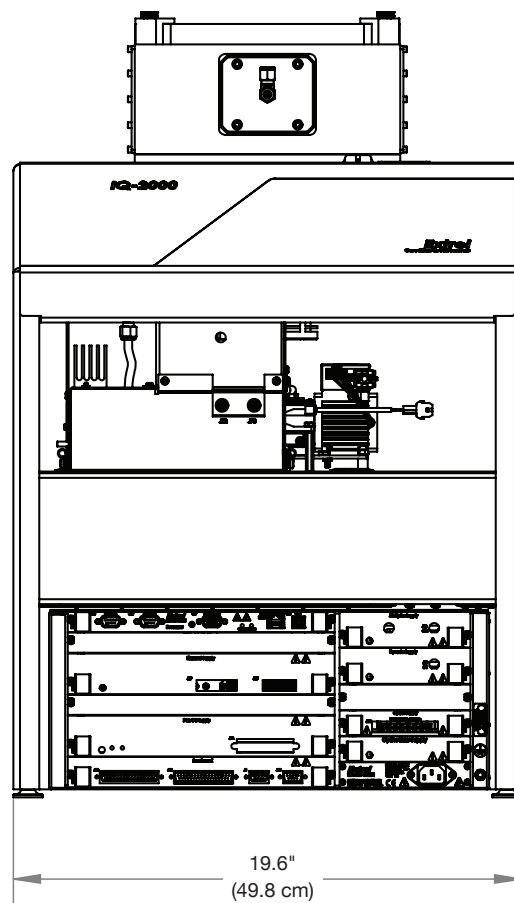
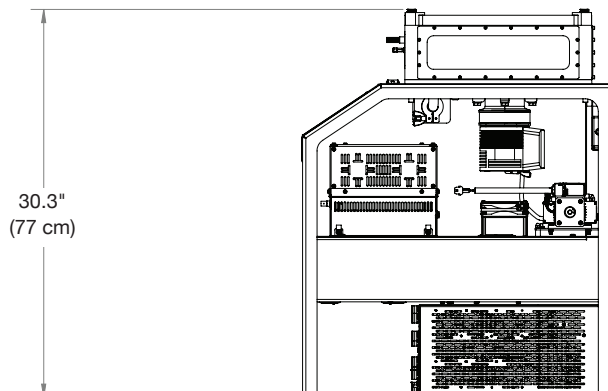
- 110 VAC, 50/60 Hz, 10 Amp circuit

Specifications:

- Average Base Pressure: 1×10^{-6} Torr with capillary leak inlet
- MAX300 plug-and-play Electron Ionization source
- Plug-and-play disposable ionizer with dual filaments
- 9.5 mm (3/8") quadrupole with pre- and post-filters
- Merlin Automation Data System for control of the system
- 1.5 mA/Torr general sensitivity
- Dry pumping system: 80 L/sec turbo pump backed by diaphragm backing pump
- Weight: 130 lbs (59 kg)
- Dimensions: HxWxD: 30.3" x 19.6" x 24.7"
(77 cm x 49.8 cm x 62.7 cm)

Additional Options:

- Closed Sample Inlet: allows for headspace analysis
- Transport Cart: wheel the system between analysis areas
 - Dimensions with cart 45" x 20.5" x 25.5" (114.3 cm x 52 cm x 65 cm)
- Pumping Options: system is fitted with a convertible base plate to allow for a larger turbo pump for lower system base pressure



Support: For over 50 years, Extrel has been committed to providing the highest quality support services for the thousands of instruments installed worldwide. Factory-trained-and-certified personnel offer industry-leading support to Extrel customers at every stage of the research environment.

Microsoft and Excel are registered trademarks of Microsoft Corporation in the United States and/or other countries. Origin is a registered trademark of OriginLab Corporation. Apple is a trademark of Apple Inc. registered in the U.S. and other countries. Amazon and Kindle are trademarks of Amazon.com, Inc. or its affiliates. Extrel is a registered trademark of Extrel CMS, LLC.



www.extrel.com
412-963-7530

©2015 Extrel CMS, LLC. All rights reserved. IQ-2000 is a trademark of Extrel CMS, LLC.

RPE-108A